

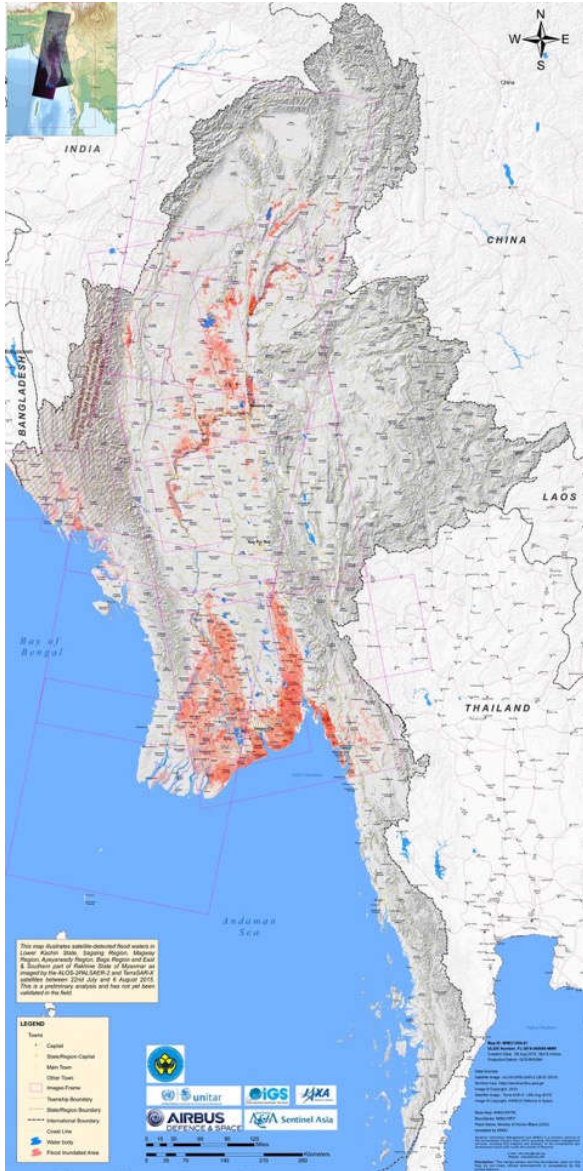


Situation Report 2 | 17 August 2015

National Natural Disaster Management Committee

Republic of the Union of Myanmar

Headline s



On the left, the extent of the flood waters between 10 July 2015 and 10 August 2015, confirmed by satellite (MIMU).

<i>Headline Effects of Flooding, 15 August 2015</i>		
Affected State/Region	Deaths	Affected Population
Ayeyarwaddy	4	453,424
Bago	2	177,197
Chin	5	14,192
Kachin	1	6,219
Kayah		7,714
Magway	2	308,046
Mandalay	11	15,362
Mon		6,632
Rakhine	62	111,568
Sagaing	14	444,294
Shan	9	7,506
Yangon		62,917
Total	110	1,615,071

This situation report was jointly prepared by the Government of Myanmar, the UN System and the ASEAN AHACentre.

- Torrential rain, starting on 16 July 2015, and the onset of cyclone Komen has triggered severe and widespread floods and landslides across 12 states and regions in Myanmar.
- The President has declared that Chin, Magway, Rakhine and Sagaing are Natural Disaster Affected Areas on 31 July 2015, in accordance with article [11] of the Natural Disaster Management Law.
- Whilst the majority of the rivers are currently below danger levels, transportation remains a challenge as many roads and bridges were damaged in the disaster or are covered in mud or debris.

Key Messages

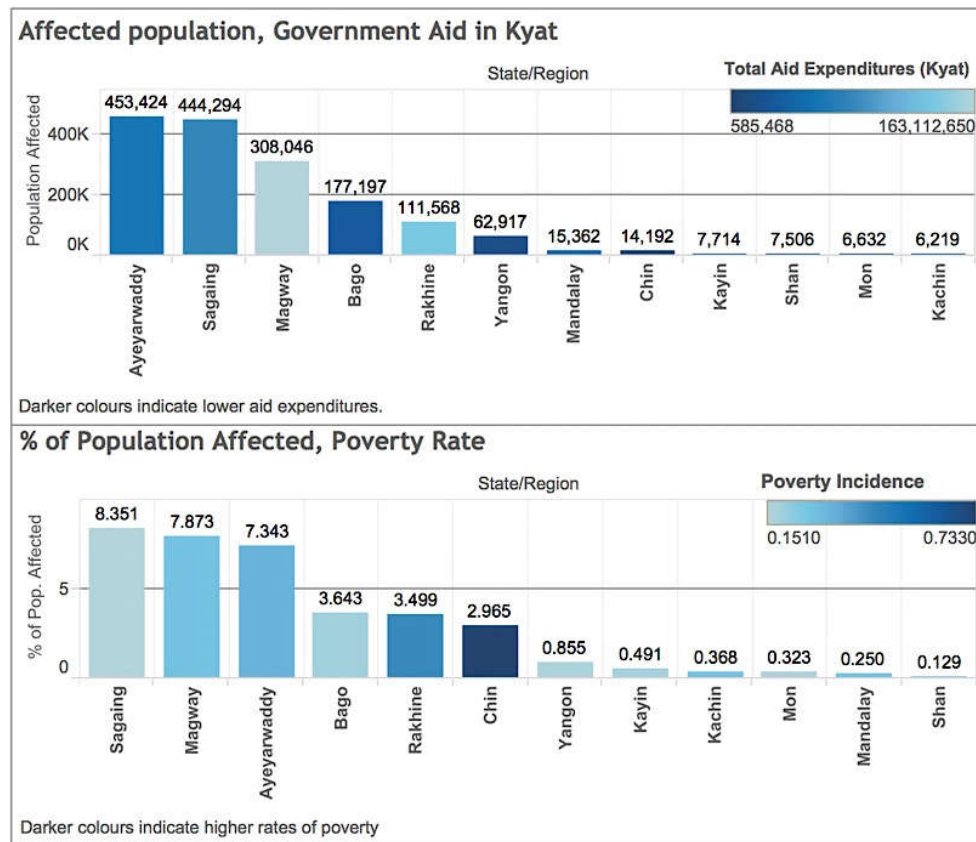
- The Vice-President shared, on 14 August 2015, the national recovery coordination structure, along with coordination mechanisms and guiding principles for building back better.
- The National Natural Disaster Management Committee, Working Committees, Sub-Committees and state/regional governments met to identify emergency needs and to formulate a mechanism for recovery-phase interventions on 12 August 2015.
- The Recovery Coordination Committee (RCC) was formed on 10 August 2015. The 28-member committee is chaired by the Union Minister of the Ministry of Construction.
- In the spirit of "One ASEAN One Response", ASEAN Member States, through the AHACentre, have deployed the ASEAN Emergency Response and Assessment Team (ASEAN ERAT) and mobilised the Disaster Emergency Logistic System for ASEAN (DELSA) to support the government of Myanmar in this time of crisis.

Situation Overview

As of 15 August, according to the National Natural Disaster Management Committee (NNDMC), a total of 1,615,335 people have been affected (including 264 people in Tanintharyi); cumulatively, 333,178 households have been displaced and 110 people have died. The damage to farmlands has been widespread, with 1,421,886 acres being inundated and 910,337 acres of crops being damaged. Additionally, 16,095 houses have been totally damaged. The effects of the flood on infrastructure have also been severe: with 766 bridges, 760 road sections, 466 schools and 242 health facilities destroyed. The Government of Myanmar continues to lead the emergency response. To date, MM K2.09 billion (USD 1.8 million) has been provided to affected populations. Priority humanitarian needs are food, water and sanitation services, shelter and access to emergency health care.

Damage Assessments and Humanitarian Response

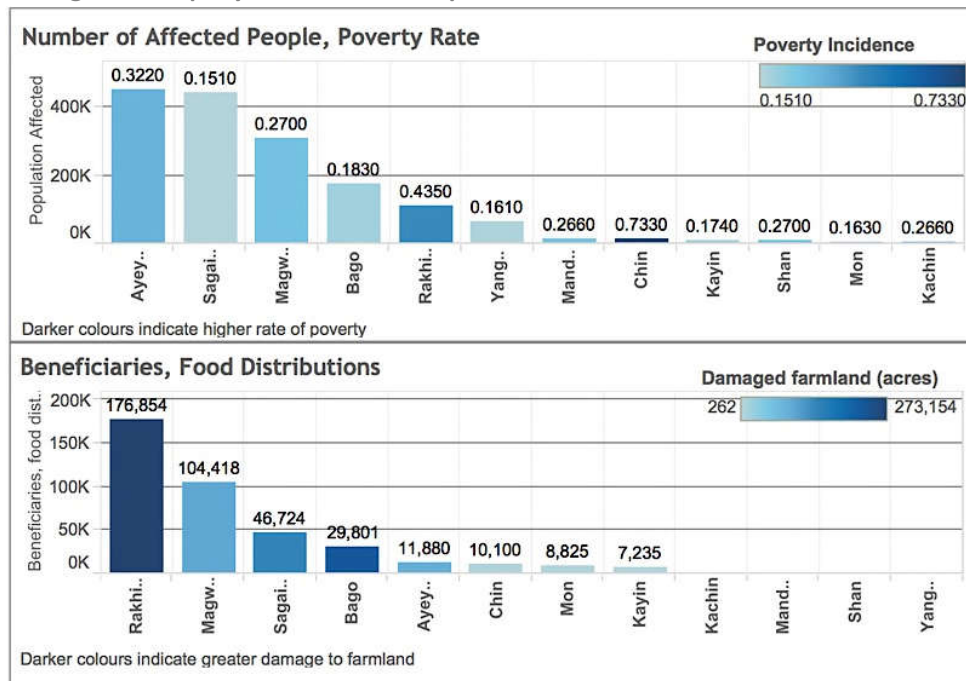
Ayeyarwaddy, Sagaing and Magway have the highest number of affected people, collectively accounting for approximately 75% of the affected population. Bago, Ayeyarwaddy and Sagaing have some of the largest gaps in relief expenditures, probably due to their large populations of affected people. Ayeyarwaddy, Sagaing and Magway also have the largest proportions of their total populations affected by the flooding. In terms of vulnerability, Chin and Rakhine are the poorest areas. This sitrep makes use of MOSWRR data from July-August 2015.



Data from MOSWRR, IHLC Survey

FOOD SECURITY AND AGRICULTURE

Across the affected areas, 435,000 people are estimated to be in need of food assistance. 1,997 of a planned 4,995 MT of food has been distributed across Ayeyarwaddy, Bago, Chin, Kayin, Magway, Mon, Rakhine and Sagaing reaching 415,307 people. Rakhine has received, on average, the largest amount of food assistance per affected person. Currently, approximately 2.6% of the affected population in Ayeyarwaddy has received food assistance; additional distributions are planned.



Data from IHLC Survey, WFP

Additionally, 1,421,886 acres of farmland has been inundated, with waters still yet to fully recede in downriver areas, including Ayeyarwaddy, Bago and Yangon. 910,337 acres of the inundated farmland suffered crop damage, of which 619,971 acres sustained severe damage; this is likely to disrupt the planting season and pose a risk to long-term food security:

State/Region	Farmland Inundated (acres)	Farmland Damaged (acres, desc)
Rakhine	291,219	273,154
Bago	375,925	226,712
Sagaing	187,856	141,957
Magway	96,846	96,846
Ayeyarwaddy	300,649	85,917
Yangon	102,170	59,346
Kachin	32,127	15,663
Chin	4,426	4,089
Shan	12,993	3,481
Mon	13,010	2,294
Kayin	1,162	616
Mandalay	3,503	262
Total	1,421,886	910,337

Data from Ministry of Agriculture



Inundated areas in Sagaing Region

HEALTH

Across the affected areas, 242 Health facilities have been destroyed; in order to restore access to essential health services, the Ministry of Health is operating 340 mobile clinics and has established 1,059 temporary clinics. Current priorities include:

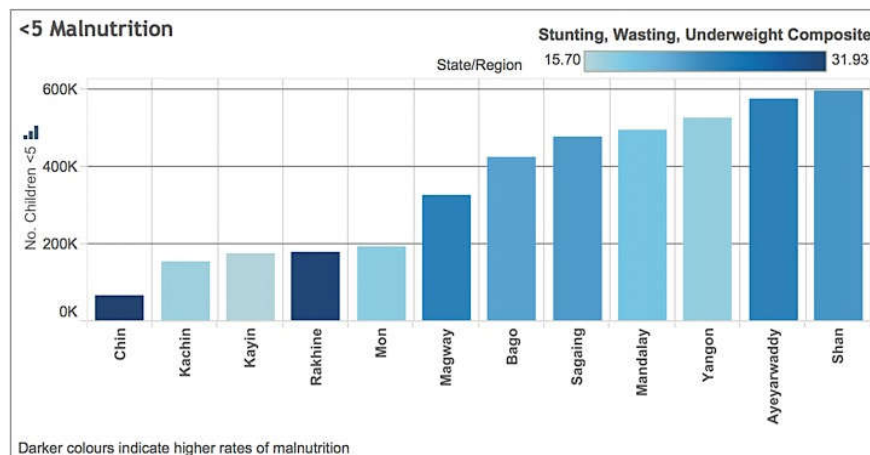
- The restoration of health facilities and reproductive health services.
- The procurement of cold chain equipment for Pwint Phyu Township.
- The strengthening of the Early Warning Alert and Response System (EWARS) for detection of outbreaks; the participation of humanitarian agencies in EWARS is also a priority and essential for its effectiveness.
- The widespread implementation of preventive measures against communicable diseases, including water sanitation, food sanitation, environmental sanitation and health education.

State/Region	Damaged Health Facilities* (desc.)

Ayeyarwaddy	82
Rakhine	78
Bago	40
Sagaing	22
Magway	12
Chin	7
Shan	1
Total	242

*Data from Ministry of Health, Includes hospitals, health stations and health centres

With regards to the chart below, malnutrition was a major concern prior to the floods; the nutritional status of vulnerable groups such as children under 5 are a priority:



Data from IHCL Survey

WASH

The clean up of drinking water sources and the repair of latrines is an immediate priority which will facilitate the return of displaced persons. The Ministry of Health (MOH) has cautioned that people returning to their homes are at risk of waterborne diseases and have limited access to clean water; the MOH has chlorinated 37,874 water sources so far. There is also a nationwide shortage of water purification sachets/tablets. MOH has also distributed 267 drums of bleach, 3,430 treated bed nets, 28,800 chlorine tablets and 14,700 latrine pans. In Rakhine State, the infiltration of drinking water sources by sea water is a major issue: water trucking is currently ongoing.

EDUCATION

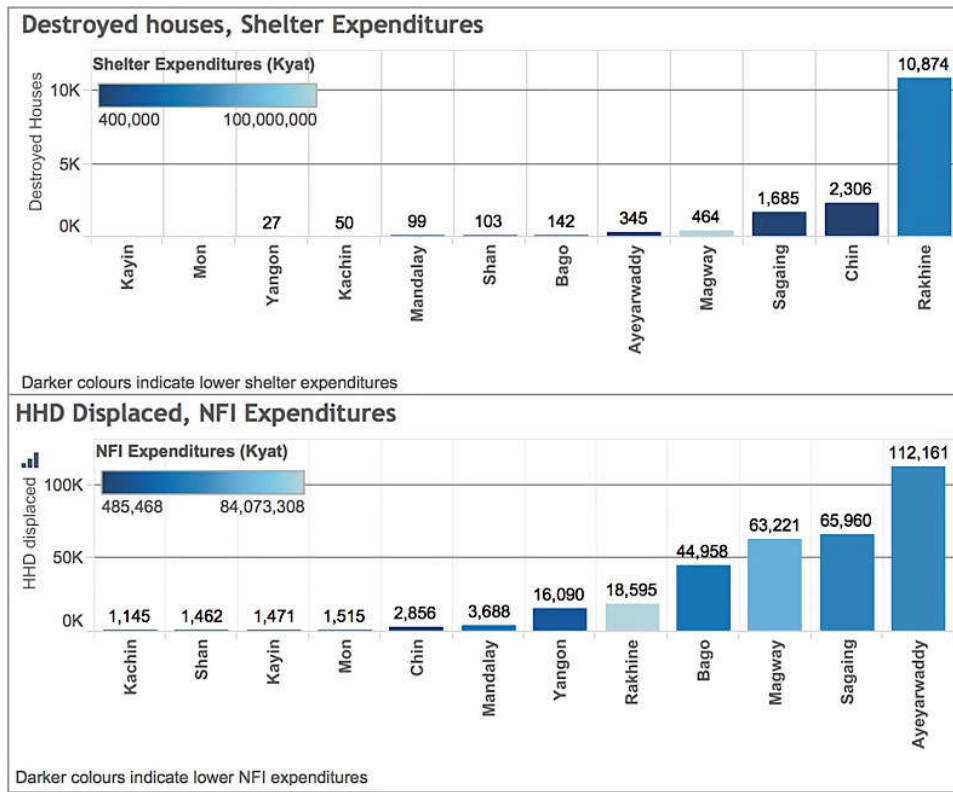
The Ministry of Education reports 466 schools have been damaged by flooding. Across Rakhine, Chin, Sagaing and Magway, the Education Cluster has identified 1,200 schools that have been affected, with some being used as evacuation centres. To ensure continuity in students' educations, the reconstruction and repair of damaged schools; replacing learning and school supplies and school furniture; and the restoration of damaged WASH facilities in schools have been identified as priorities. 105 temporary learning spaces have been established in Rakhine and local authorities.

State/Region	Schools Damaged (desc.)
Rakhine	360
Chin	55
Magway	25
Ayeyarwaddy	11
Sagaing	10
Shan	3
Bago	1
Kachin	1
Total	466

Data from The Mirror, 13.8.2015

SHELTER

The floods have destroyed 16,095 houses; cumulatively, 333,178 households have been displaced across the affected areas. 200 of the 10,000 planned shelter kits have been dispatched to Rakhine. The Recovery Coordination Committee will identify gaps in shelter and meet the required needs.



PROTECTION

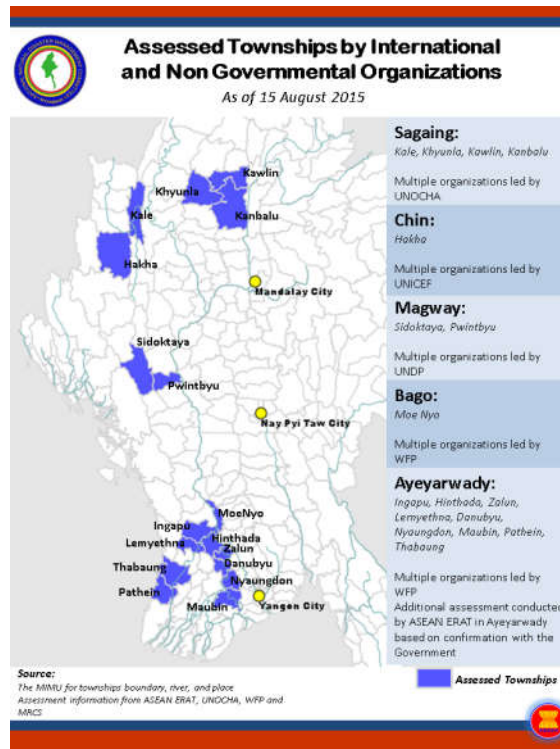
Based on the number of persons under 19 and the percentage of affected people per state/region, it is estimated that 589,263 children have been affected by the flooding. According early estimates from the Protection Cluster, approximately 200,000 women and girls of reproductive age have been affected. MSOWRR has dispatched psychosocial care and counselling teams to Sagaing, Magway, Rakhine and Chin. Additionally, in collaboration with UNICEF, MOSWRR conducted refresher courses on the specific post-disaster needs and issues of women and children for its staff. MRCS, with ICRC and other partners in the Protection Cluster, continue to screen for unaccompanied and separated children.

Coordination

The National Natural Disaster Management Committee (NNDMC), chaired by the Vice-President, coordinates national-level disaster response activities. The NNDMC, delivers relief and recovery services through the Emergency Operations Centre (EOC) and Recovery Coordination Centre (RCC) and the Recovery Planning Forum, which are responsible for liaising with state-and-region-level authorities to contextualised and locally-appropriate intervention plans.

17 August 2015 | Myanmar Floods Response 2015

At the request of the Government of Myanmar, ASEAN ERAT was tasked with conducting the assessment of the Ayeyawaddy Region, establishing the Mobile Storage Unit at the Relief and Resettlement Department in Yangon and facilitating incoming relief items. ASEAN AHA Centre's Coordination Team Leader is also stationed in Nanyitaw to facilitate coordination with the National Government and other international organisations. The AHA Centre has also been providing situational analysis and resource-tracking capabilities to the EOC. The contribution of the ASEAN Member States pertaining to the mobilisation of the ASEAN ERAT and the Disaster Emergency Logistic System for ASEAN of the AHA Centre, independent of bilateral contributions, amounts to approximately USD300,000.



Recovery Plans

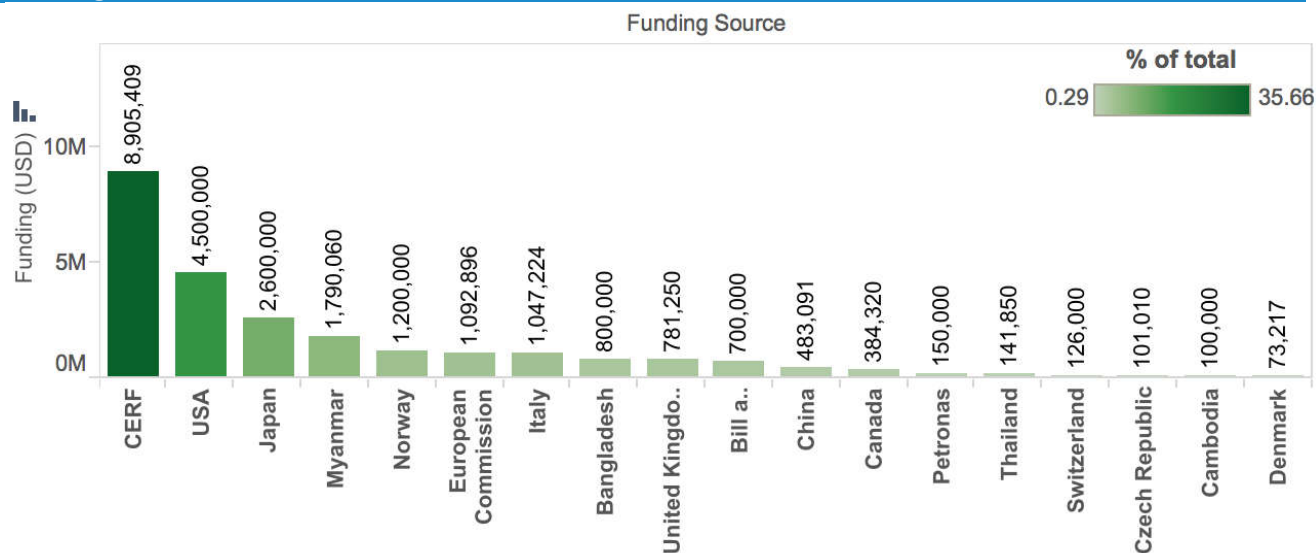
The Vice President presented the NNDMC's Post-Disaster Recovery Coordination Framework, building lessons learnt from the Cyclone Nargis Response and establishing the abovementioned national recovery coordination structure as well as Special Recovery Zones in Chin and Rakhine State, where there are much higher populations of vulnerable groups. Chin and Rakhine face unique economic, livelihood and migration challenges. According to MOSWRR, the success of recovery efforts is dependent on a) joint assessments b) the management of information c) coordinated reconstruction of infrastructure and d) the economic soundness of planned interventions. To that end, the NNDMC has requested that aid be evenly balanced between in-kind and cash interventions.

	Chin State	Rakhine State
Damage and Loss	High; large populations of vulnerable people	High; weak disaster resilience; large populations of vulnerable groups
Access	Remoteness and challenges in accessibility	Coastal areas requiring logistical support
Additional Considerations	Prone to landslides and infrastructure damage	Importance of conflict-sensitive approaches



Landslide damage in Chin State

Funding

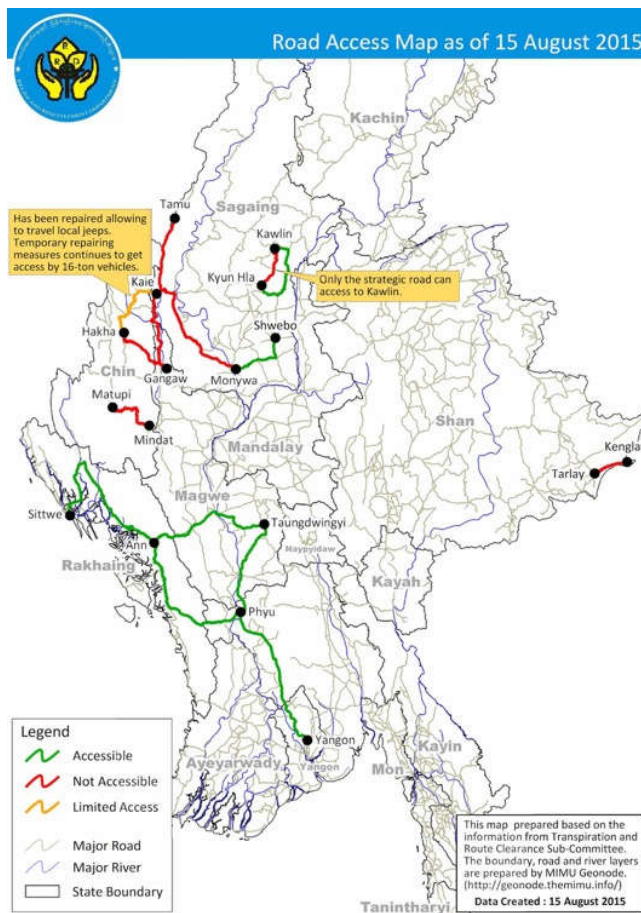


The chart above combines information on financial commitments to the floods response to-date from the UN and the Government of Myanmar. Assistance from MOSWRR amounts to MMK 576 million (USD493,573) and assistance from state/regional governments amounts to MMK 1.5 billion (USD1,296,487).

Security and Access

Access has been granted to all flood-affected areas by the NNDMC for flood response activities. For safety and local-level security concerns, humanitarian agencies are requested to coordinate with the relevant local authorities. Travel authorisations may be obtained from the EOC.

Damaged roads sections, bridges and small, local dams have been reported across flood-affected areas, with roads being covered in mud and debris. Access in Chin is particularly challenging. Clean up and debris clearance is currently being led by Transportation Route Clearance Subcommittee of the Ministry of Transport.



State/Region	Bridges damaged	Roads damaged	Dams affected
Chin	303	267	2
Sagaing	234	203	49
Shan	65	22	7
Bago	46	63	1
Kachin	44	17	3
Magway	36	79	35
Rakhine	22	19	258
Ayeyarwaddy	12	83	
Kayin	4	6	
Yangon		1	
Total	766	760	355

Data from Transportation Route Clearance Subcommittee

Map of Government Relief Assistance



Myanmar Information Management Unit

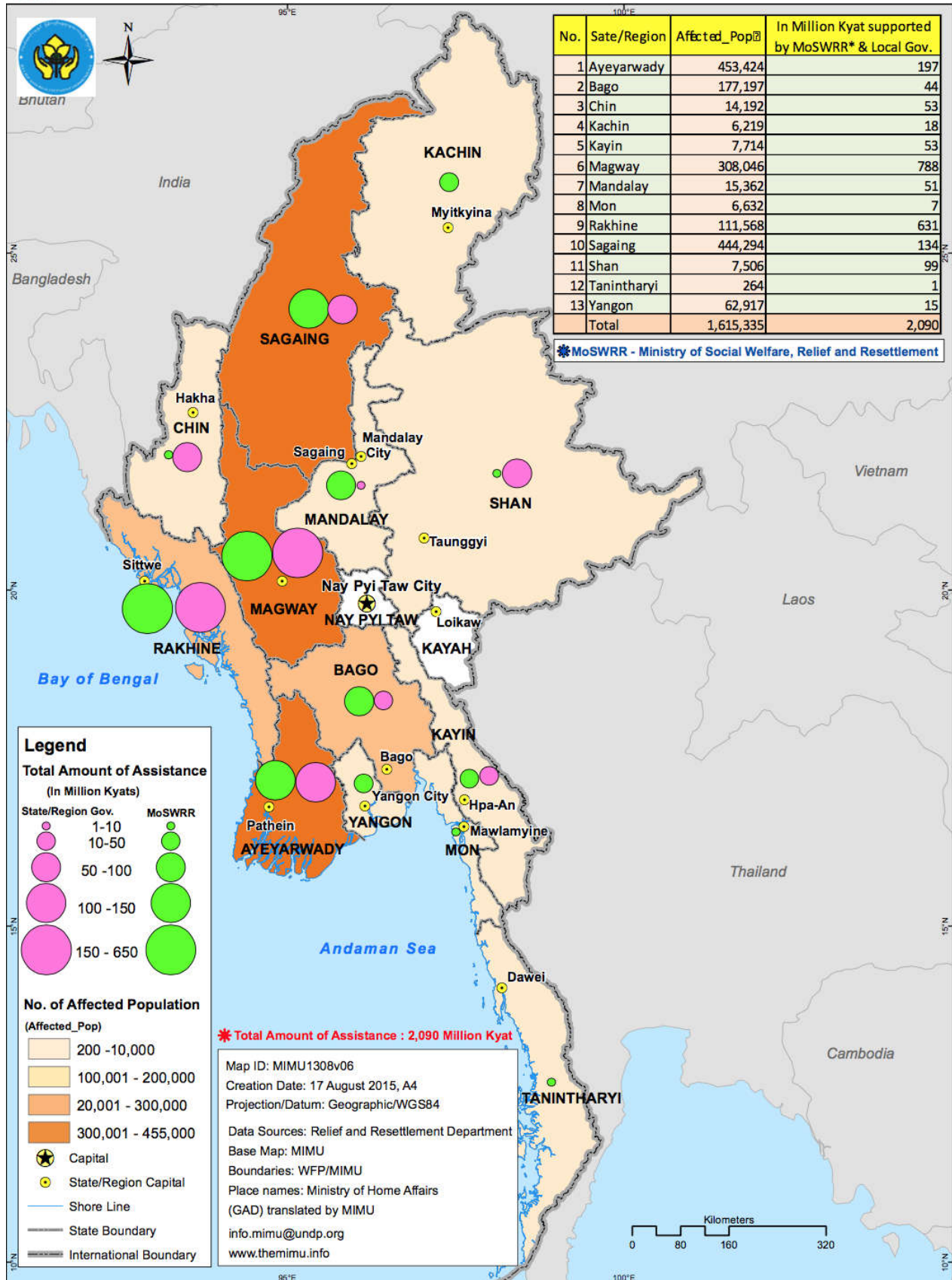


Government of Canada / Gouvernement du Canada



Schweizerische Eidgenossenschaft / Confederazione Svizzera / Confederaziun Svizra / Confederaziun svizra

Relief Items Distributed And Affected Population (15 August 2015)



Map of Flood Response Activities



Myanmar Information Management Unit

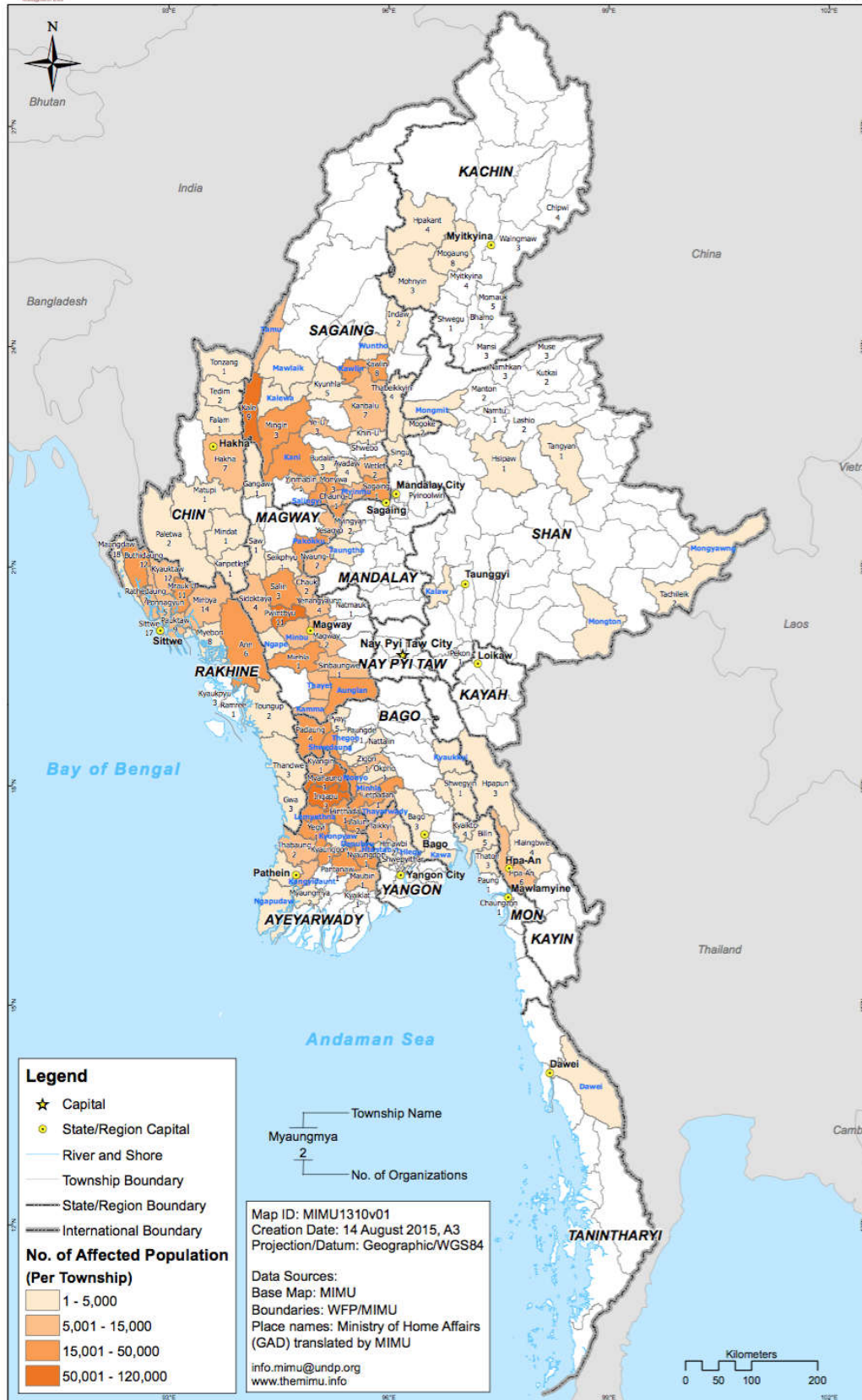
Flood Response Activities Reported to MIMU (as of 12 August 2015)



Government of Canada / Gouvernement du Canada



Schweizerische Eidgenossenschaft / Confédération suisse / Confederazione Svizzera / Confederaziun svizra / Embassy of Switzerland in Myanmar



State/Region	Township	No. of Org	
Ayeeyarwady	Hinthada	1	
	Inpada	3	
	Kyaukse	1	
	Kyangon	1	
	Kyaungogon	1	
	Maubin	1	
	Myaungung	1	
	Myaungmya	2	
	Nyaungodon	1	
	Panlaw	1	
Bago	Thabaung	2	
	Yegyi	1	
	Zalun	2	
	Bago	3	
	Shwepyithar	1	
	Letpadan	1	
	Nallain	2	
	Okpho	1	
	Padadaung	4	
	Paungode	1	
Chin	Pyaw	5	
	Zaon	1	
	Falam	1	
	Hakha	7	
	Kanpetlet	1	
	Matup	1	
	Mindat	1	
	Paletwa	2	
	Todim	2	
	Kachin	Tonzang	1
Bhamo		1	
Chipwi		4	
Hpakant		4	
Mansi		3	
Mogaung		8	
Mohmyin		3	
Monsauk		6	
Myittha		4	
Shwepyithar		1	
Kayah	Wundwin	3	
	Halingbwe	4	
	Hpa-An	6	
	Hpaon	3	
	Chauk	2	
	Gangaw	1	
	Magway	2	
	Minka	1	
	Natogyi	1	
	Magway	Phawbun	11
Salin		3	
Saw		1	
Seikogyi		1	
Sidokaya		4	
Sinbaungwe		1	
Yenangyaung		4	
Yesaybo		1	
Mandalay		Mogoke	2
		Mingyan	2
	Nyaung-U	2	
	Pyin O Lwin	1	
	Singu	2	
	Thabeikkyin	4	
	Mon	Bilin	5
		Chaungzon	1
		Kyaikto	4
		Paung	1
Thalon		3	
Rakhine		Ani	6
		Buthidaung	12
		Gae	3
		Kyaikgyi	3
		Kyaiklaw	12
	Maungdaw	18	
	Minya	14	
	Mrauk-U	11	
	Myebon	8	
	Paikataw	9	
Sagay	Ponmye	5	
	Remree	1	
	Saladaung	7	
	Sitaw	17	
	Thandwe	3	
	Toungtha	2	
	Avadaw	4	
	Budalin	3	
	Chaung-U	1	
	Indaw	2	
Shan	Kale	9	
	Kanbalu	7	
	Kawlin	8	
	Khin-U	1	
	Kyaukse	3	
	Mingon	3	
	Monywe	3	
	Sagaing	1	
	Shwebo	1	
	Wetlet	2	
Yangon	Ye-U	3	
	Yimmabin	1	
	Tachileik	2	
	Hpaon	1	
	Kubak	2	
	Lashio	2	
	Manton	2	
	Muse	3	
	Namhkan	3	
	Namtu	1	
Tangyan	1		
Pekon	1		
Yangon	Hmawbi	2	
	Shwepyithar	1	
Takkyi	1		

Legend

- ★ Capital
- State/Region Capital
- River and Shore
- Township Boundary
- State/Region Boundary
- International Boundary

No. of Affected Population (Per Township)

- 1 - 5,000
- 5,001 - 15,000
- 15,001 - 50,000
- 50,001 - 120,000

Map ID: MIMU1310v01
 Creation Date: 14 August 2015, A3
 Projection/Datum: Geographic/WGS84

Data Sources:
 Base Map: MIMU
 Boundaries: WFP/MIMU
 Place names: Ministry of Home Affairs (GAD) translated by MIMU
 info.mimu@undp.org
 www.themimu.info

Disclaimer: The names shown and the boundaries used on this map do not imply official endorsement or acceptance by the United Nations.